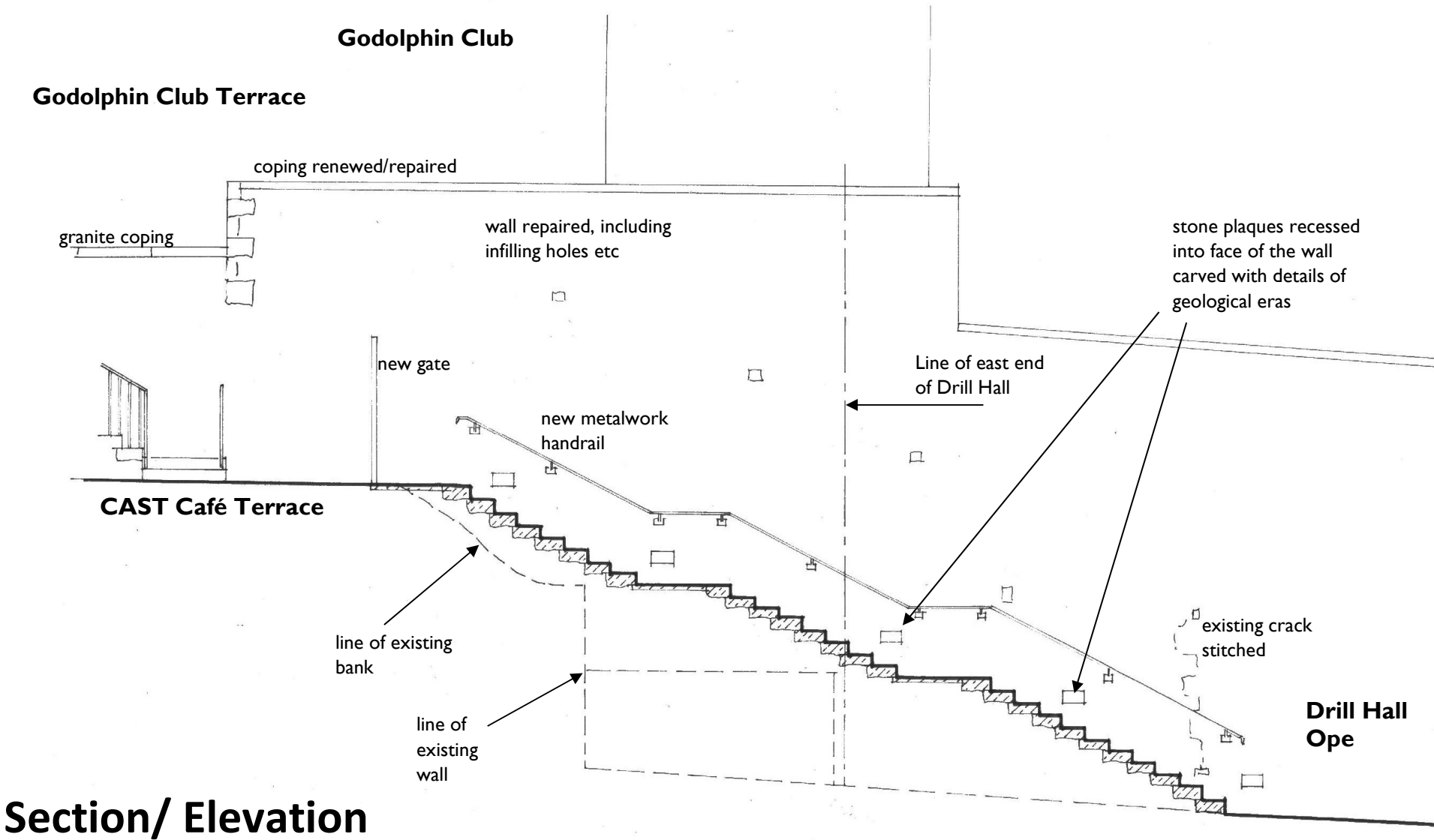


# Helston's Cultural Quarter

## Stepped Access between CAST Terrace and Drill Hall Ope

## A Celebration of Cornish Building Stone



27 steps in three flights. Each step made from a different Cornish building stone, assembled in geological chronological order from the earliest rock at the bottom to the youngest at the top. Dates and names of the geological eras for each section of steps carved into small blocks of stone set into the face of the retaining wall to the side. The name of each building stone recorded, by being letter-cut into the surface of the treads, perhaps with QR codes for more information. An interpretation board could be sited nearby.

27 different building stones to be sourced. Some are already available, but part of the project would be the exploratory opening up of some of the many important “Heritage Quarries” that have been identified by Cornwall Council.

These might include:

- Pentewan
- Newnham Elvan
- Tremore Elvan
- Watergate Rhyolite
- Bodmin Moor Biotite Granite
- Carnmenellis Granite
- Luxulyanite
- Kit Hill Granite
- Tregoning Hill Granite
- Lands End Granite
- Cataclews stone
- Polyphant (although may be too soft)
- Tintagel Greenstones
- Dean Quarry Greenstone
- Serpentine (might be too slippery)
- Sandrock
- Delabole slate
- Callywith slate
- Penrice



### The Identification of Heritage Quarries

Minerals Safeguarding DPD  
Evidence Report  
December 2018

